

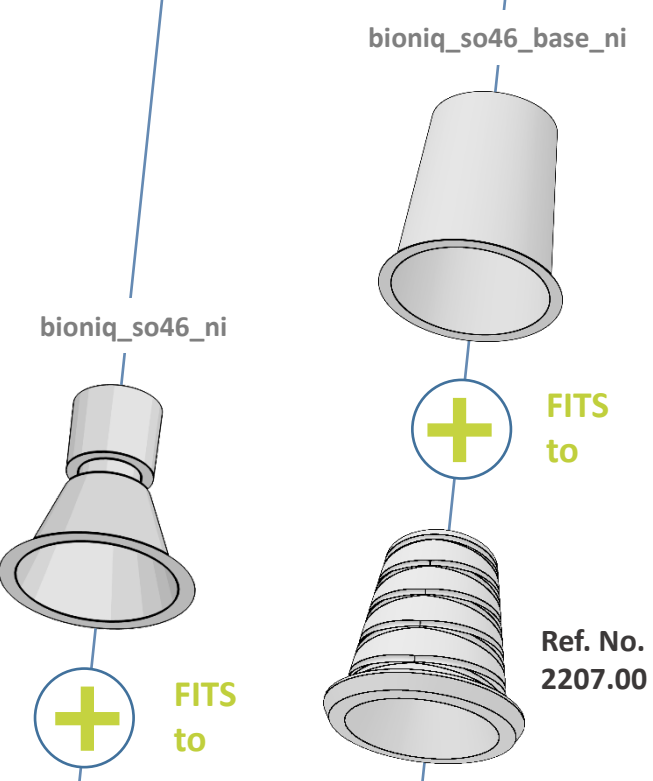


# exocad LASAK BioniQ QR Exocad library structure

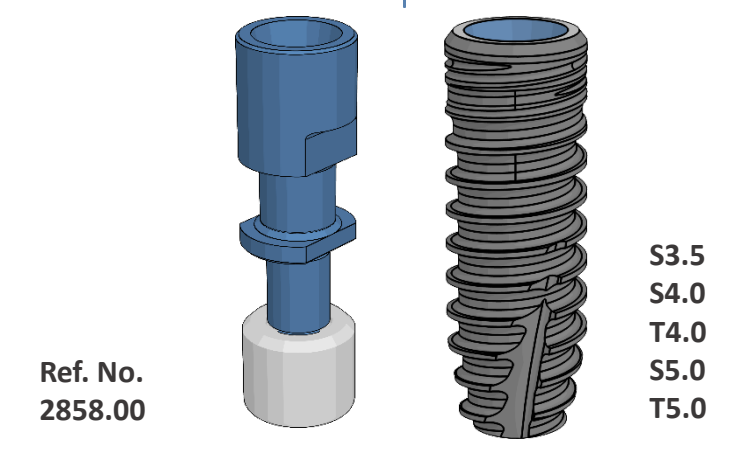
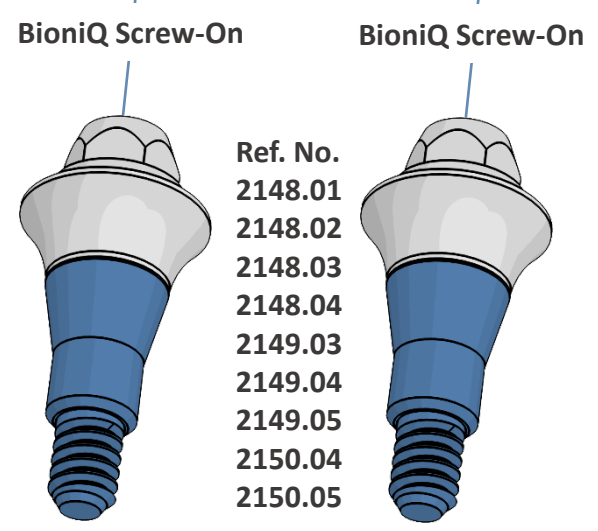
Scan Analog Screw-On, BioniQ, reverse technique  
Ref. No. 2835.00



Dummy base shown in the Exocad library



The real base of the BioniQ component



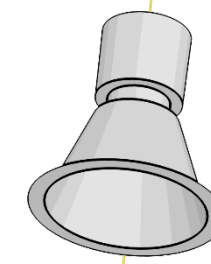
## exocad LASAK BioniQ QN Exocad library structure

Scan Analog Screw-On, BioniQ, reverse technique  
Ref. No. 2835.00



Dummy base shown  
in the Exocad library

bioniq\_so46\_ni



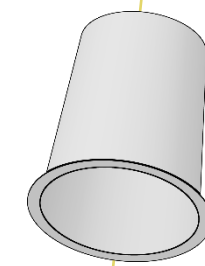
FITS  
to

BioniQ Screw-On

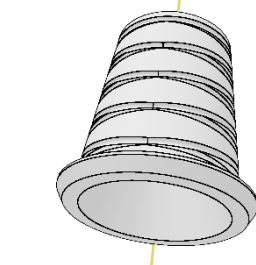


Ref. No.  
2177.01  
2177.02  
2177.03  
2177.04  
2178.03  
2178.04  
2178.05

bioniq\_so46\_base\_ni



FITS  
to



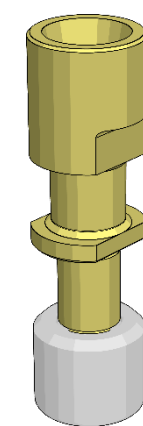
Ref. No.  
2207.00

BioniQ Screw-On



The real base of the  
BioniQ component

Ref. No.  
2859.00



S2.9

